

Professional Courses in CAD

ADMISSION OPEN

In this department students learn specialised jewellery Design software's and computers assists them in creation, modification, analysis, or optimization of a design. This CAD software's help them to increase their productivity, improve their quality of Design, improve communication through documentation, and to create a database for manufacturing. CAD output is used to print / machine the 3D models which are used as final prototypes.



Course Name	NSQF Level	Duration
Advance Certificate in CAD (Rhinceros with Matrix)	4	540 hrs. (5 Months)
Advance Certificate in CAD (Matrix)	4	240 hrs. (2 Months)

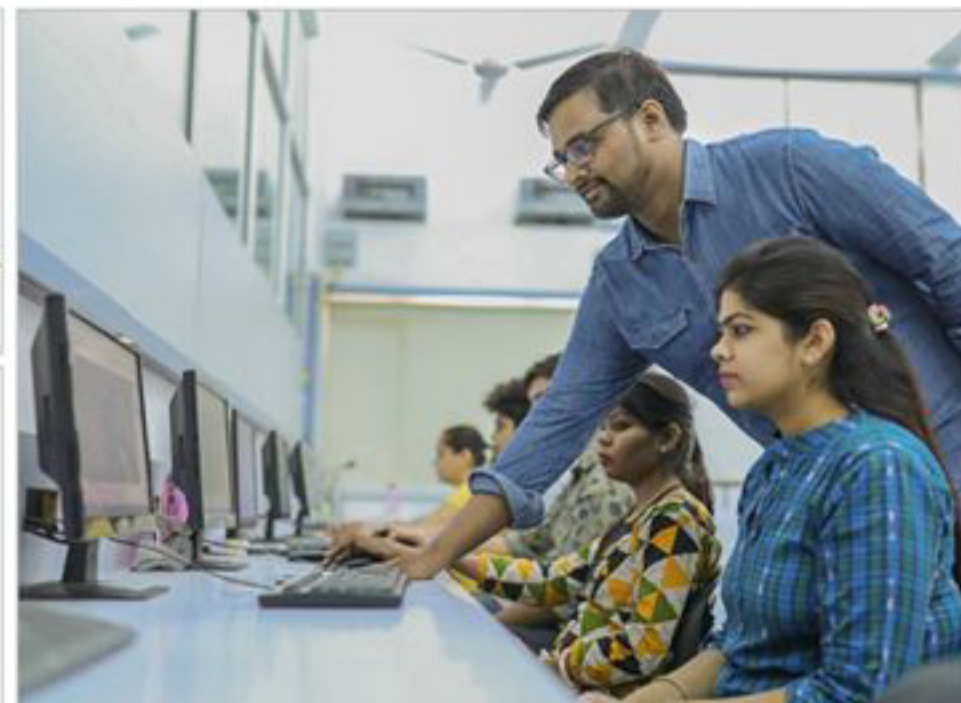
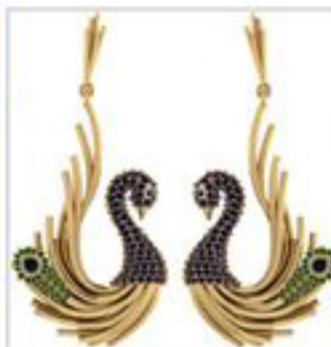
Admission Criteria

- For Rhino & Matrix Software 12th Pass & Basic Knowledge of Computer

- For Matrix 12th Pass & Rhino Software

Admission Calendar

- 1st & 3rd Working Day of Every Month



FOR ENQUIRY: